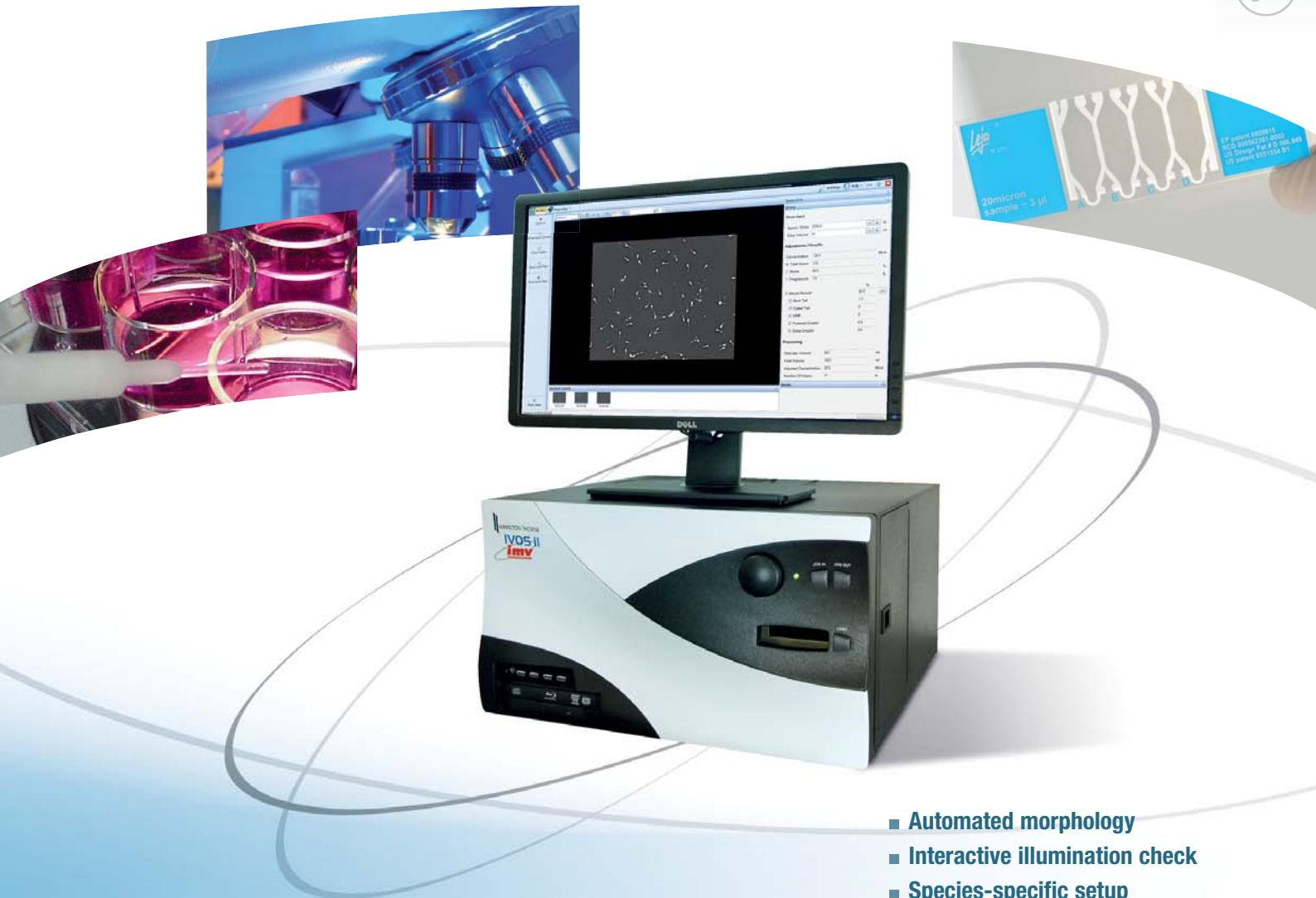




www.imv-technologies.com

Next Generation CASA System

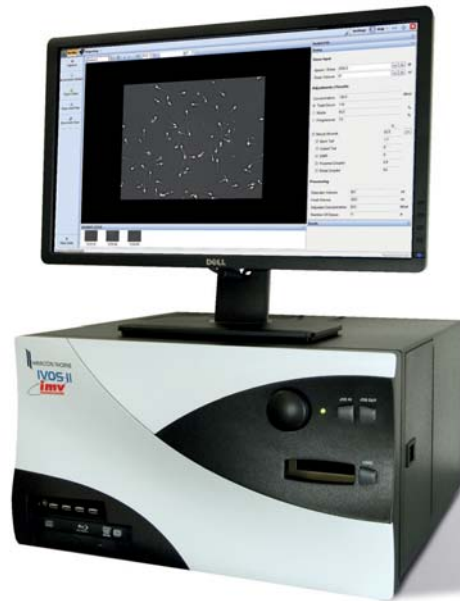


- Automated morphology
- Interactive illumination check
- Species-specific setup
- Multilanguage



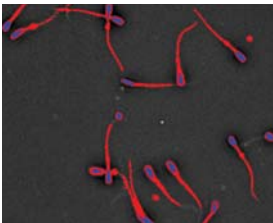
Next Generation CASA Systems IVOS II and CEROS II

- Standardization
- Objective & reliable measurement
- Accuracy and repeatability
- Traceability
- Multiparameters
- Decision-making tool



Software Overview

Interactive Illumination Check



The new software features the unique color-coded Illumination Check to optimize identification of the sperm head and sperm tail. This feature removes any guesswork in setting the illumination and promotes consistency between all users.

Screen Layout



1. Controls to initiate analysis
2. Quick selection of analysis setup
3. Results, updated in real time.
4. Live image area
5. Thumbnail gallery of captured video images.



Key benefits

- Automated morphology
- Dose calculation:
 - Concentration
 - Extender volume
 - Number of doses
- Automated heated stage *
- Fluorescence *
- Redesigned graphical user interface
- Intuitive navigation
- Multilanguage:
 - English, Russian, Chinese and Spanish (with additional languages to come)
- High-speed digital camera:
 - Superior image quality
 - Seamless image capture and playback
- Unlimited storage of predefined analysis setups
- Built-in database with customizable reports
- ASCII data export
- Fast: 8 seconds / 10 fields (30 images per field)

*Available with IVOS II

Analysis Results

Real time Updating

Analysis results and dose calculation are updated in real time as each field is added to the analysis.

Full Field Playback

User-definable. Selecting a thumbnail image from the gallery opens the captured video. The video may be replayed in full or you may scroll through, frame by frame.

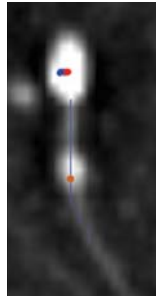
Zoom Cell Playback

Selecting a track from the playback image opens up a zoomed image of the tracked cell. Kinematic measurements are displayed relative only to the selected track.

Cell Morphometry and Automated Morphology

The software also provides cell morphometry values, including head length, width, perimeter and area. It also identifies automatically:

- Distal droplets
- Proximal droplets
- Distal Midpiece Reflexes
- Coiled tails
- Bent tails



Measured and Calculated Parameters

Counts, concentration and percentages

Total, static, motile, progressive and slow cells

Doses

- Extender volume
- Final volume
- Number of doses

Kinematic measurements

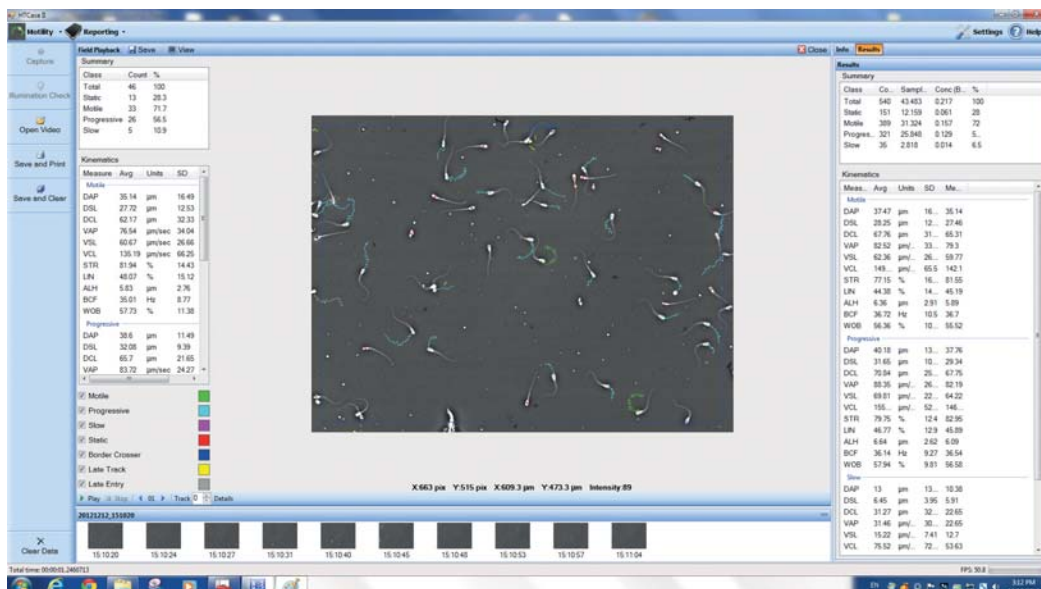
DAP, DSL, DCL, VAP, VSL, VCL, ALH, STR, LIN, BCF, WOB (Average, SD, Median)

Morphometric characteristics

Head length, width, perimeter and area. Tail length and straightness. Droplet distance.

Automated morphology

- Distal droplets
- Proximal droplets
- Distal Midpiece Reflexes
- Coiled tails
- Bent tails

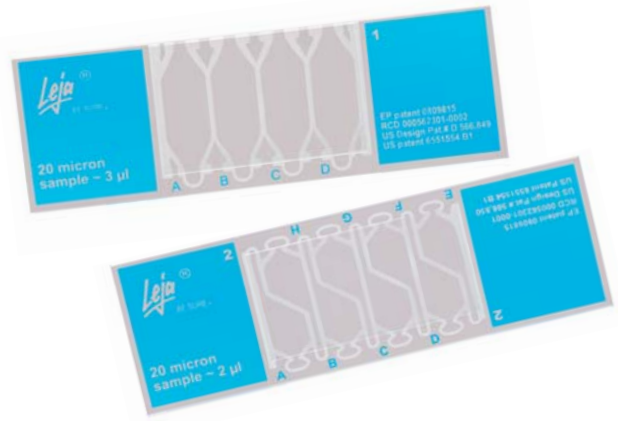
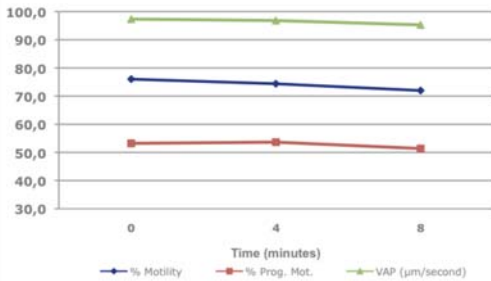




Pre-calibrated counting chambers

■ Disposable Leja counting chambers offer you the most reliable, quick, and accurate solution!

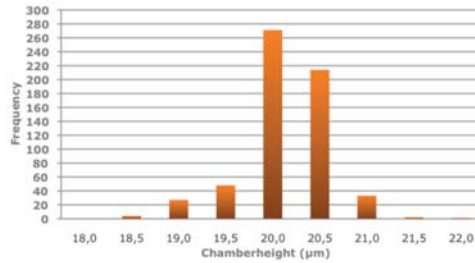
- Best brand name on the market
- Specially designed for semen analysis
- Tested not spermotoxic
- Disposable slides: time-saving
- Highest precision, repeatability and reliability
- Accurate and constant chamber depth (20 micron)
- Easy-to-use
- Available with 4 or 8 chambers



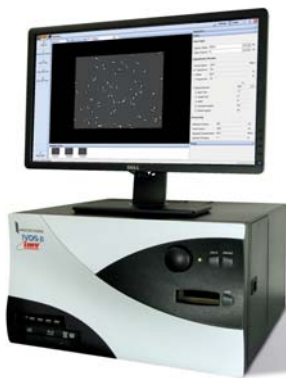
■ Three quality control stages per batch:

- Chamber height*
- Visual inspection (18 points)
- Toxicity control

* Certificate of analysis for each batch available at www.lejaslides.com



Semen analysis by IMV Technologies

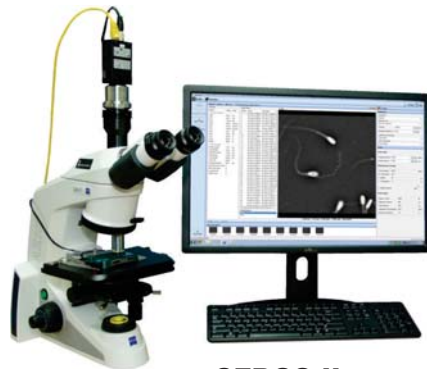


IVOS II

Ref. 024911: IVOS II

Ref. 024910: IVOS II fluorescence

- Built-in system
- Automated heated stage
- Fluorescence
- Automated morphology



CEROS II

Ref. 024905: CEROS II Zeiss

Ref. 024904: CEROS II Olympus

- Manual heated stage
- Automated morphology



EasyCyte II plus

Ref.022841



EasyCyte II mini

Ref.022843



- ISO 9001:2008 and medical reference ISO 13485:2003 certified
- Production site complies with the strictest standards of quality and safety
- Continuous improvement of product, production and quality control processes
- All materials and finished products potentially in contact with living cells tested for bio compatibility
- 95% made in France



www.imv-technologies.com



+ 33 (0) 233 346 464
contact@imv-technologies.com